



Programming and pairing guide for Discover Next hearing instruments

Contents

Best practices for successful fittings with Discover Next hearing instruments	3
How to connect to an Android™ smartphone	4
How to connect to an iPhone®	5
How to answer Bluetooth® phone calls.....	6
How to connect to the Remote Plus app	8
Daily use with the Remote Plus app	9
How to setup a remote adjust session.....	10
How to view client adjustments with the equalizer	12
Coach	13
Ratings.....	14
Environmental Balance.....	15
How to setup the PartnerMic	16
How to connect to the PartnerMic.....	17
How to setup the Remote Control	18
How to connect to the Remote Control.....	19
How to set up the TV Connector	20
How to connect the TV Connector	21
Daily use of the TV Connector	22
Unitron TrueFit hearing instrument configuration	23

Android is a registered trademark of Google LLC. The Bluetooth® wordmark and logos are trademarks owned by Bluetooth SIG, Inc. iPhone is a registered trademark of Apple Inc., registered in the United States and other countries. IOS is a registered trademark of Cisco Technology, Inc.

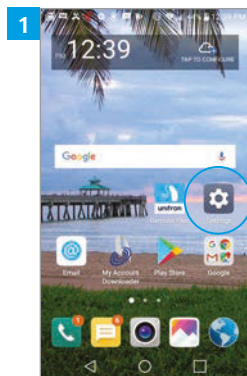
Best practices for successful fittings with Discover Next hearing instruments

To ensure successful fittings with Discover Next hearing instruments, we recommend:

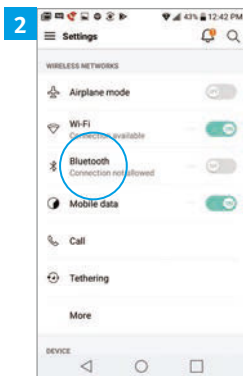
- Discover Next hearing instruments must be fit using Noahlink Wireless to program
- Check phone compatibility prior to fitting a Discover Next hearing instrument. Unitron TrueFit fitting software provides a tool that allows you to check the compatibility of your client's smartphone under: Instruments > Selection > click on your Discover Next instrument style and technology level > Check smartphone compatibility.
- Detect and save the hearing instruments in the Unitron TrueFit fitting software before pairing with a phone
- Close the Unitron TrueFit fitting software before pairing to the phone or Remote Plus app
- **For hearing aids that use disposable batteries:** Open and close the hearing instrument battery doors to place the hearing instruments in pairing mode. **For lithium-ion rechargeable hearing instruments:** Press and hold the lower part of the button until a red light flashes (3 seconds), then press and hold again until a green light flashes to start the pairing mode. For all models, the hearing instruments remain in pairing mode for 3 minutes.
 - First, pair **only** the selected phone ear hearing instrument to the phone for hands-free phone calls and listening
 - Second, pair **both** hearing instruments to the Remote Plus app

Smartphones and traditional mobile phones with a compatible Bluetooth Hands-Free Profile

How to connect to an Android smartphone



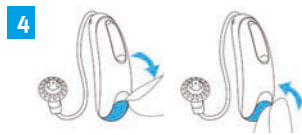
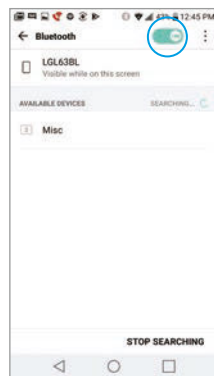
1 Open the “Settings” menu from the Android home screen



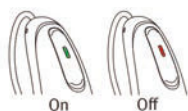
2 Click on the Bluetooth® icon



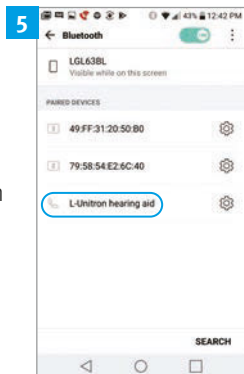
3 Move the slider to activate the Bluetooth® function



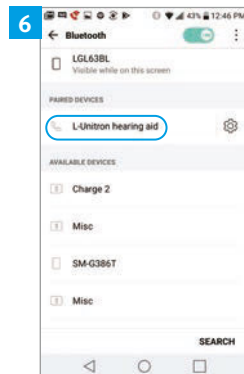
4 **For hearing aids that use disposable batteries:** Open and close the battery door to enable Bluetooth® search



For lithium-ion rechargeable hearing instruments: Press and hold the lower part of the button on each instrument for 3 seconds until a red light flashes, then press and hold again until a green light flashes to enable Bluetooth® search

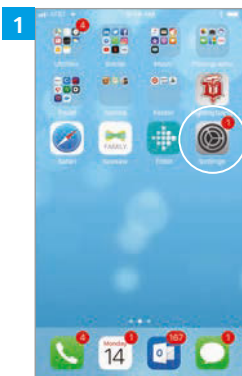


5 The name of the hearing instrument will appear, click on it to select

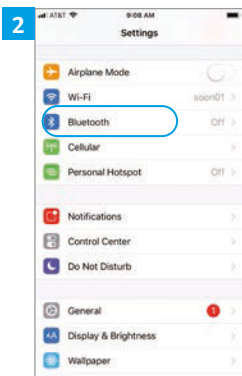


6 The phone is now connected to your client's hearing instruments

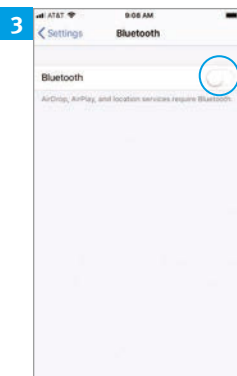
How to connect to an iPhone



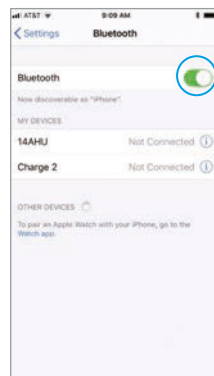
1 Open the “Settings” menu on the iPhone home screen



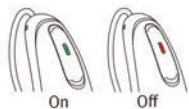
2 Click on the Bluetooth® icon



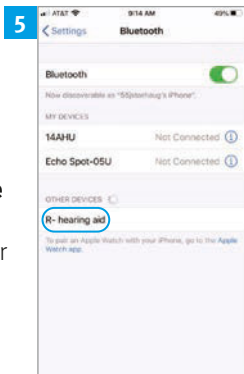
3 Move the slider to activate the Bluetooth® function



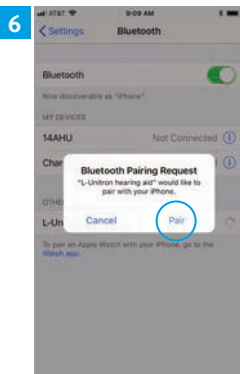
4 **For hearing aids that use disposable batteries:** Open and close the battery door to enable Bluetooth® search



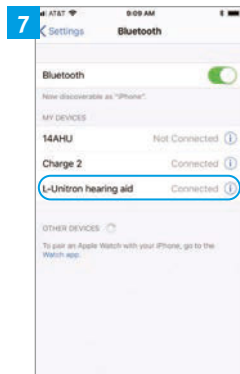
For lithium-ion rechargeable hearing instruments: Press and hold the lower part of the button for 3 seconds until a red light flashes, then press and hold again until a green light flashes to enable Bluetooth® search



5 The name of the hearing instrument will appear, click on it to select



6 Click “Pair” if the pairing request pops up

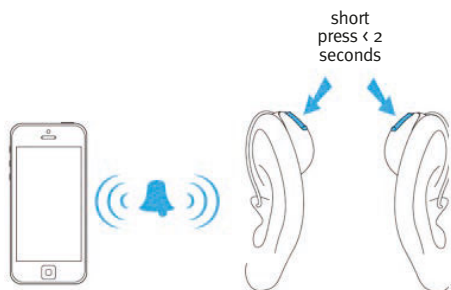


7 The iPhone is now connected to your client’s hearing instruments

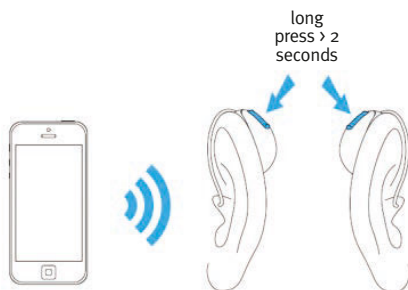
How to answer Bluetooth® phone calls

When the phone rings, accept the call with a short push (< 2 seconds) on either the upper or lower part of the button on either hearing aid. A long push (> 2 seconds) on either the upper or lower part of the button on either hearing aid rejects the call/sends the call to voicemail/ends the call.

Answer a phone call



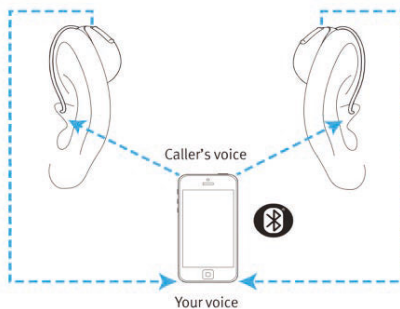
Reject a phone call/send to voicemail/end a call



Phone calls on a mobile phone

Discover hearing instruments allow **direct** communications with Bluetooth® compatible phones (hands-free classic profile). When paired and connected to a phone, your client will hear the voice of their caller in both ears directly from the hearing instruments. The hearing instruments also pick up your client's voice using its own microphones.

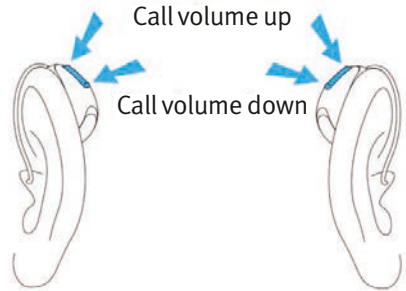
- ① You do not need to hold your mobile phone close to your mouth, your voice is transmitted through the hearing aids to your mobile phone.



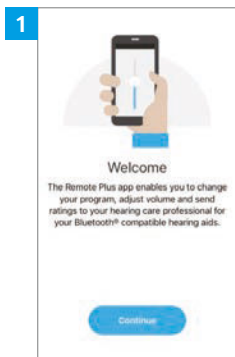
How to adjust the balance between mobile phone calls and the surrounding environment

While on a call on a mobile phone:

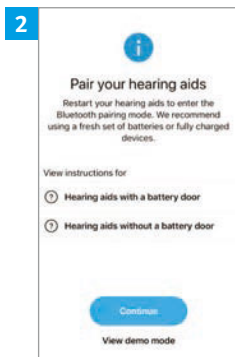
- Push the **upper** part of the hearing aid button to **increase** the call volume and **decrease** the volume of sounds in your environment
- Push the **lower** part of the hearing aid button to **decrease** the call volume and **increase** the volume of sounds in your environment



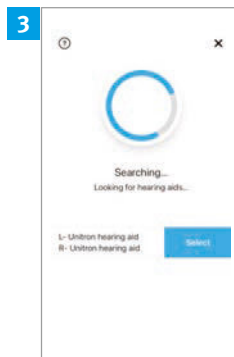
How to connect to the Remote Plus app



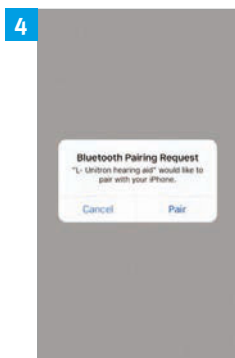
Open the Remote Plus app on your client's smartphone and click "Continue"



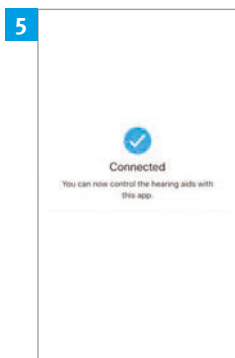
For hearing aids that use disposable batteries: Open and close the battery doors to enable Bluetooth® search, click "Continue." **For lithium-ion rechargeable hearing instruments:** Press and hold the lower part of the button on each instrument for 3 seconds until a red light flashes, then press and hold again until a green light flashes.



The application will search for your client's hearing instruments. Click Select when device(s) name(s) appear (two instruments for binaural, one for monaural).



Click "Pair" to connect

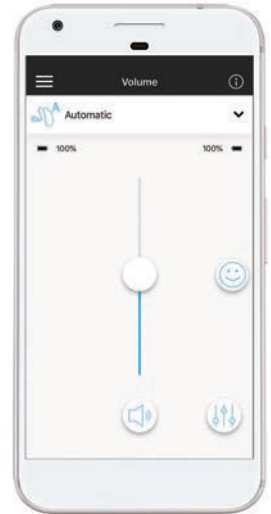


The Remote Plus app is now connected to your client's hearing instrument(s)

Daily use with the Remote Plus app

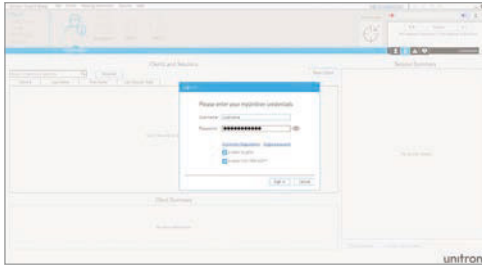
The Remote Plus app provides a way for your clients to personalize their hearing instruments as well as provide you with information about their preferences.

- Change programs
- Control volume
- Watch how-to videos
- Adjust the balance between the media audio and the environment
- Adjust tinnitus masker
- Submit ratings on their hearing experience
- Adjust their hearing instruments using the 3-band equalizer



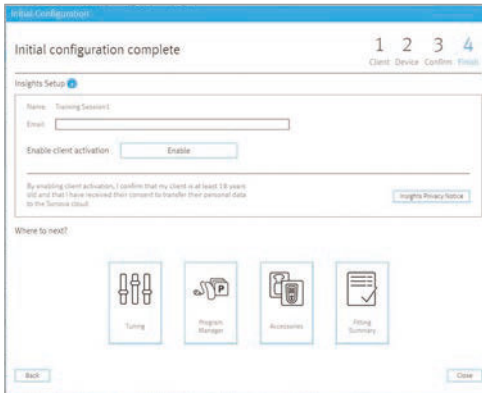
How to setup a remote adjust session

1



Login to myUnitron in Unitron TrueFit

2



Enable insights

a. Option 1 – at the end of the first fit workflow click enable

b. Option 2 – End Fitting\Insights Setup and click enable

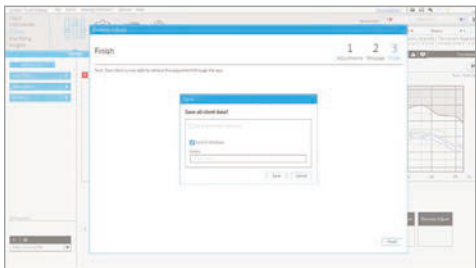
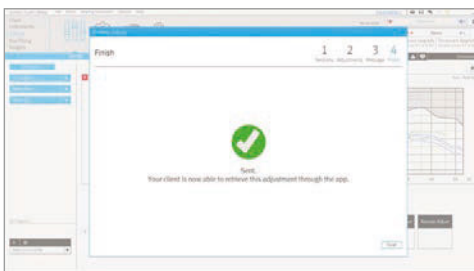
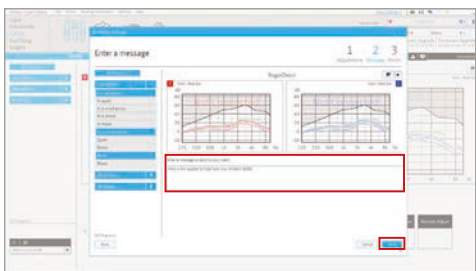
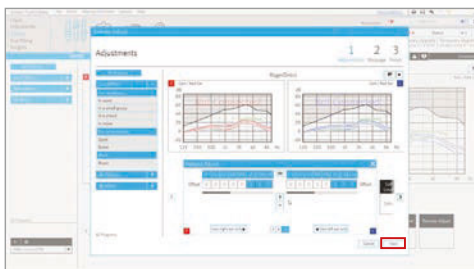
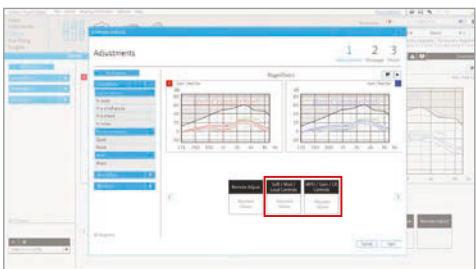
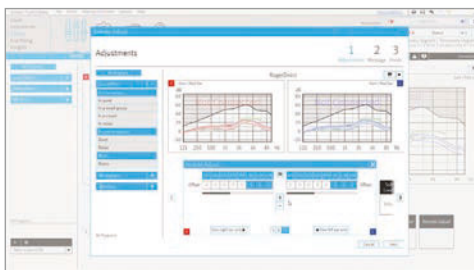
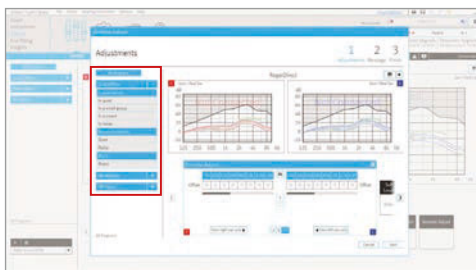
3



Fitting\Tuning – click the Remote Adjust button to open and then select Start a remote adjust session.



4 Follow the instructions in the remote adjust wizard

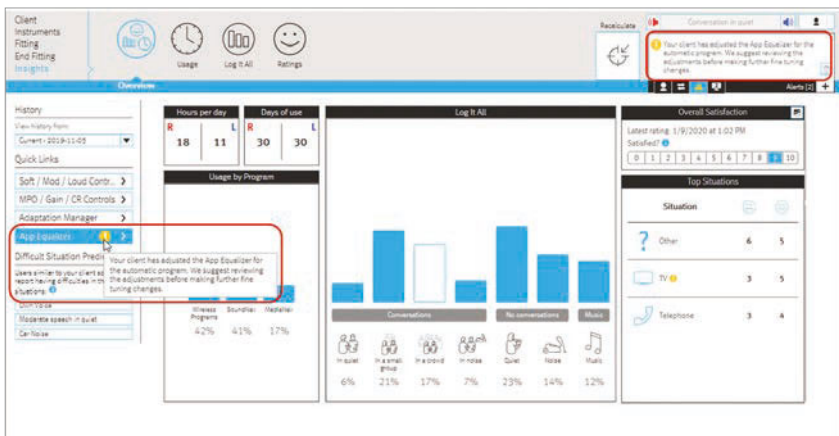


How to view client adjustments with the equalizer

Equalizer allows clients to personalize their hearing instruments in the moment when it matters most. The 3-band equalizer allows clients to adjust the bass, mid and treble frequencies with their hearing instruments independently in their automatic program, streaming programs and manual programs.



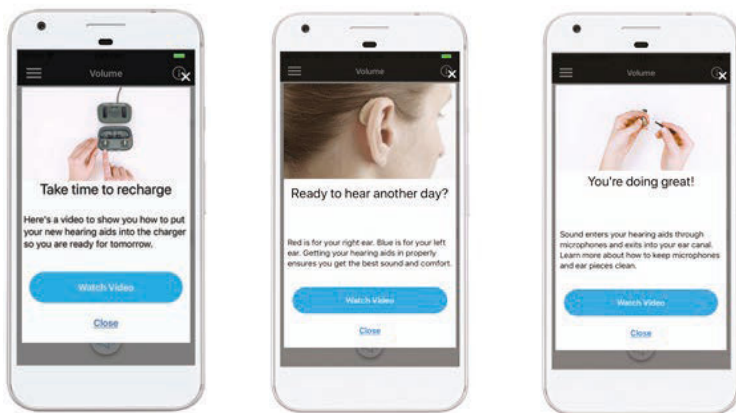
Viewing client adjustment of the equalizer in Unitron TrueFit



Coach

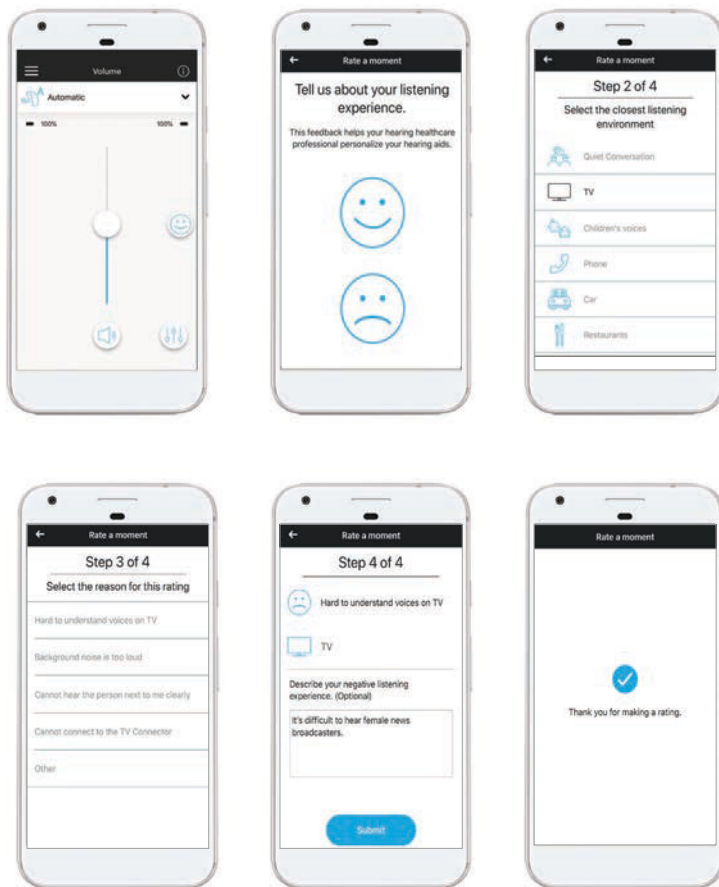
Our coach feature is designed to assist you in helping your clients reach their full potential with their new hearing aids.

- Analyze performance
- Usage, ratings, overall satisfaction
- Instruct in relevant skills
- Insertion/removal, charging/batteries, care & maintenance
- Provide encouragement
- Consistent usage, tips for hearing in noise



Ratings

Ratings is a tool in the Remote Plus app, where clients send an in-the-moment impression of their listening experience whether positive or negative. Ratings your clients have submitted can be viewed in Unitron TrueFit or myInSights. If a client sends 3 negative ratings, a notification email will be sent to the provider. This function can be turned off through the myInSights website.



Environmental Balance

Your clients can adjust the balance between the television or streamed signal and the environment using the Remote Plus app.

Slide to the left to have more surrounding environment volume and less television or streamed signal volume. Slide to the right to increase the volume of the television or streamed signal volume and less surrounding environment volume.

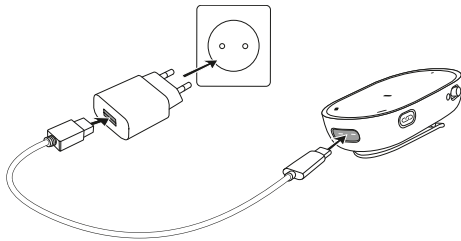


How to setup the PartnerMic

Charging the device

PartnerMic has a built-in, non-removable, rechargeable battery.

ⓘ When charging the PartnerMic for the first time, let it charge for at least 2 hours, even if the indicator light is not lit or turns green.

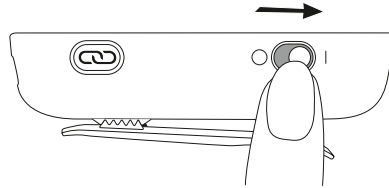


- Plug the power supply into a power socket
- Plug the USB plug into the PartnerMic charging input
- The typical charging time is 2 hours
- Charging is complete when the indicator light turns solid green

ⓘ PartnerMic will be turned off while charging.

Switching on/off

Slide the power switch to turn the PartnerMic on or off. Switch it off when not in use.

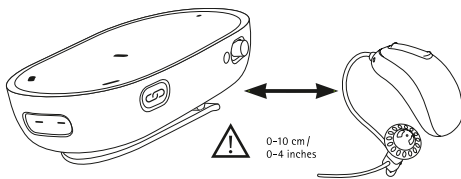


How to connect to the PartnerMic

Pairing the PartnerMic to the hearing aids

PartnerMic needs to be paired to the hearing aids before use. If the PartnerMic has not been paired to a hearing aid before it will automatically enter pairing mode at start up and blink blue.

- Make sure your hearing aid(s) are turned on
- Start the PartnerMic and hold it within 10 cm (4 inches) of the hearing aid
- Pairing is complete when the indicator light turns green and a confirmation beep will play in your hearing aid(s).



How to wear

PartnerMic is worn by the speaking partner, attached with the clip or hanging in a lanyard.

With a clip:

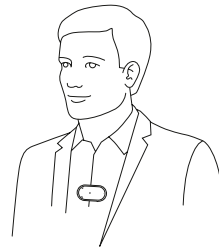
- Gently press to open the clip
- Ensure the PartnerMic is clipped securely to clothing

With a lanyard:

- Attach the PartnerMic to the lanyard with the clip
- Put the lanyard around the neck
- Adjust the length by pulling the loose ends

Positioning of the PartnerMic

- For optimal performance, place the PartnerMic 20 cm (8") below the wearer's mouth
- A distance of 50 cm (20") should not be exceeded
- Avoid tilting the PartnerMic beyond 45°
- If the clip cannot be fastened to clothing use the supplied lanyard
- To prevent scraping sounds, do not cover the PartnerMic with clothing during use



Adjusting the volume on the PartnerMic

The volume of the PartnerMic can be adjusted with the multi-function button on your hearing aid or from the Remote Control functions within the app, available for both Android and iOS.

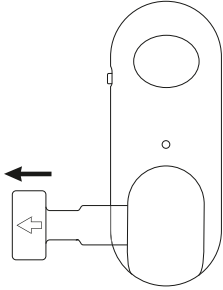
How to adjust the balance between the PartnerMic and the surrounding environment

- Push the upper part of the hearing aid button to increase the PartnerMic streamed signal and decrease the volume of sounds in your environment
- Push the lower part of the hearing aid button to decrease the PartnerMic streamed signal and increase the volume of sounds in your environment

How to setup the Remote Control

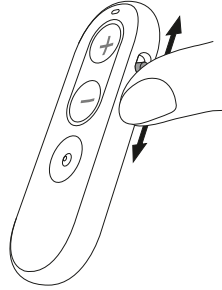
Activating the Easy Line Remote Control

Pull out the battery protective tab to activate the Remote Control.



Switching on/off

Use the slider to switch on or off.

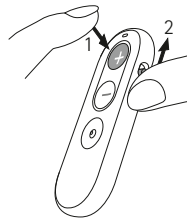


How to connect to the Remote Control

Pairing the Easy Line Remote Control with the hearing aids

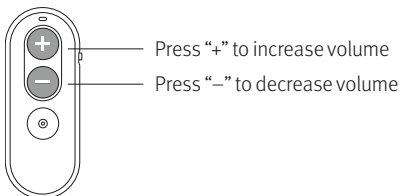
To use the Remote Control with the hearing aids, you must first pair the hearing aids.

Set the hearing aids into pairing mode by switching them on. You now have 3 minutes to pair the Easy Line Remote Control with the hearing aids.

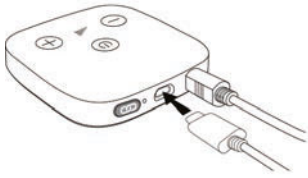


1. Press and hold the volume up “+” button
2. Switch on your Remote Control while still pressing the volume up “+” button
3. Release the volume up “+” button when the light indicator starts to blink blue
4. The Remote Control and your hearing aids will now pair automatically
5. After a successful pairing the light indicator is solid green for 5 seconds and you may hear a notification beep in your hearing aid
6. You can now use your Remote Control

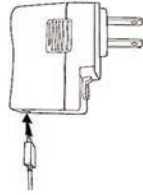
Changing hearing aid volume



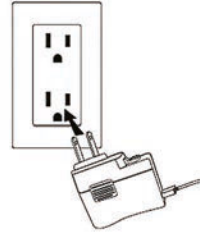
How to set up the TV Connector



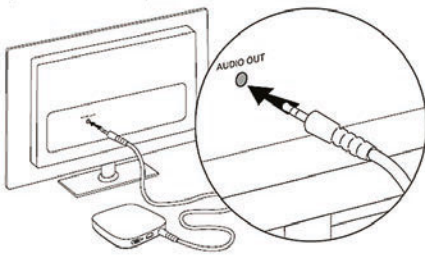
Plug the micro USB into the back of the TV Connector



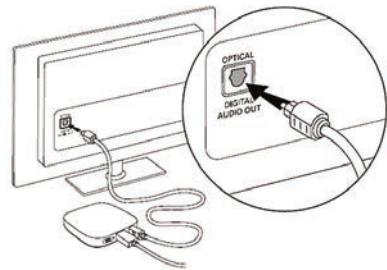
Plug the USB into the power plug



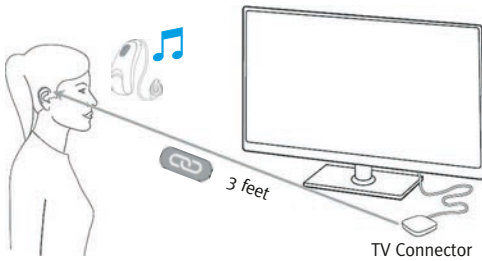
Connect the power supply to the electrical outlet



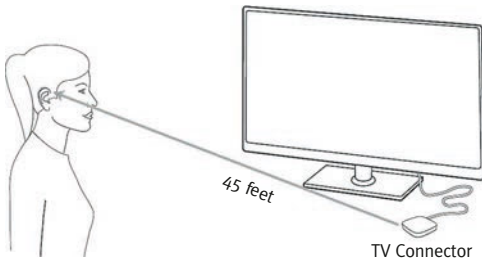
Plug the end of the audio cable (3.5mm analog jack or Digital Optical cable) into the audio output on the TV



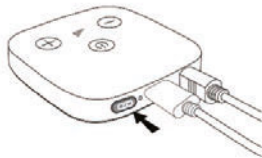
How to connect the TV Connector



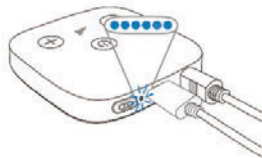
The first time the TV Connector is connected to a power source, connection to the hearing instrument(s) is **automatic**. Hearing instrument(s) must be within a range of **3 feet** of the TV Connector when pairing. Once it is paired with the TV Connector, the client will hear a confirmation melody in their hearing instrument(s).



Once the audio source is on, the audio signal will be transmitted directly to the hearing instruments via the TV Connector. A high quality audio signal is guaranteed within a **45 foot** range. The hearing instruments will **automatically** connect to the TV broadcast program once a signal is detected.



To connect new hearing instrument(s) to the TV Connector, press the connect button on the back of the TV Connector; the LED indicator light will blink blue.



Make sure the hearing instrument(s) are within a range of **3 feet** from the TV Connector.

Daily use of the TV Connector

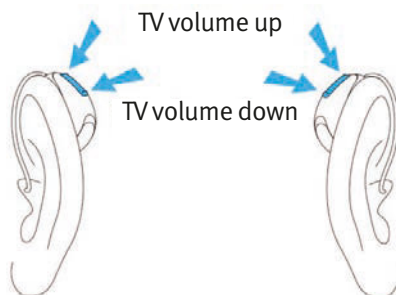
Balance of the environment

While listening with Discover hearing instrument(s) and the TV Connector, the client has the ability to adjust the balance between sounds captured from the TV and the surrounding environment by the microphones of the hearing instruments.

How to adjust the balance between the TV Connector and the surrounding environment

Adjusting the volume balance between the television and the environment:

- Push the **upper** part of the hearing aid button to **increase** the TV volume and **decrease** the volume of sounds in your environment
- Push the **lower** part of the hearing aid button to **decrease** the TV volume and **increase** the volume of sounds in your environment

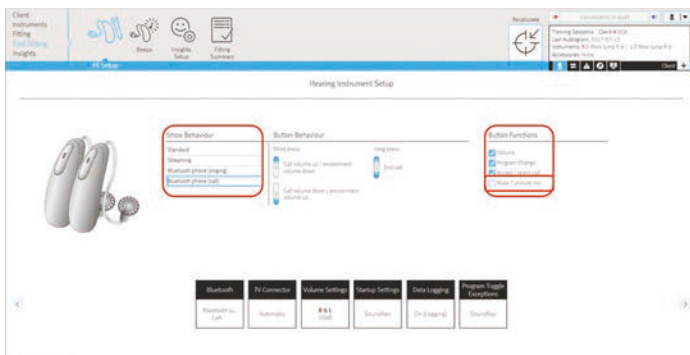


Unitron TrueFit hearing instrument configuration

End Fitting > HI Setup

The push buttons on the Discover Next hearing instruments are multi-functional and have different functions depending on the program in which the hearing instruments are used. You have the option to display detailed push button information. This screen shows the actions triggered by a short press and a long press in 4 different situations:

1. Standard;
2. Streaming;
3. Bluetooth® phone (ringing);
- and 4. Bluetooth® phone (call).



When programming the instruments, before closing out of Unitron TrueFit, assign the Bluetooth® phone ear for easy pairing: End Fitting> HI setup > Bluetooth. Save and close Unitron TrueFit.



Adaptive bandwidth is enabled by default. This can be unchecked and changed to fixed bandwidth if a client reports sound quality concerns while streaming.



Get ready to
Love the experience

Unitron is a hearing solution company that believes people should feel really good about the entire hearing care experience, start to finish. Our ingenious products, technologies, services and programs offer a level of personalization you can't get anywhere else. Get ready to Love the experience.

800.888.8882
unitron.com/us

sonova
HEAR THE WORLD